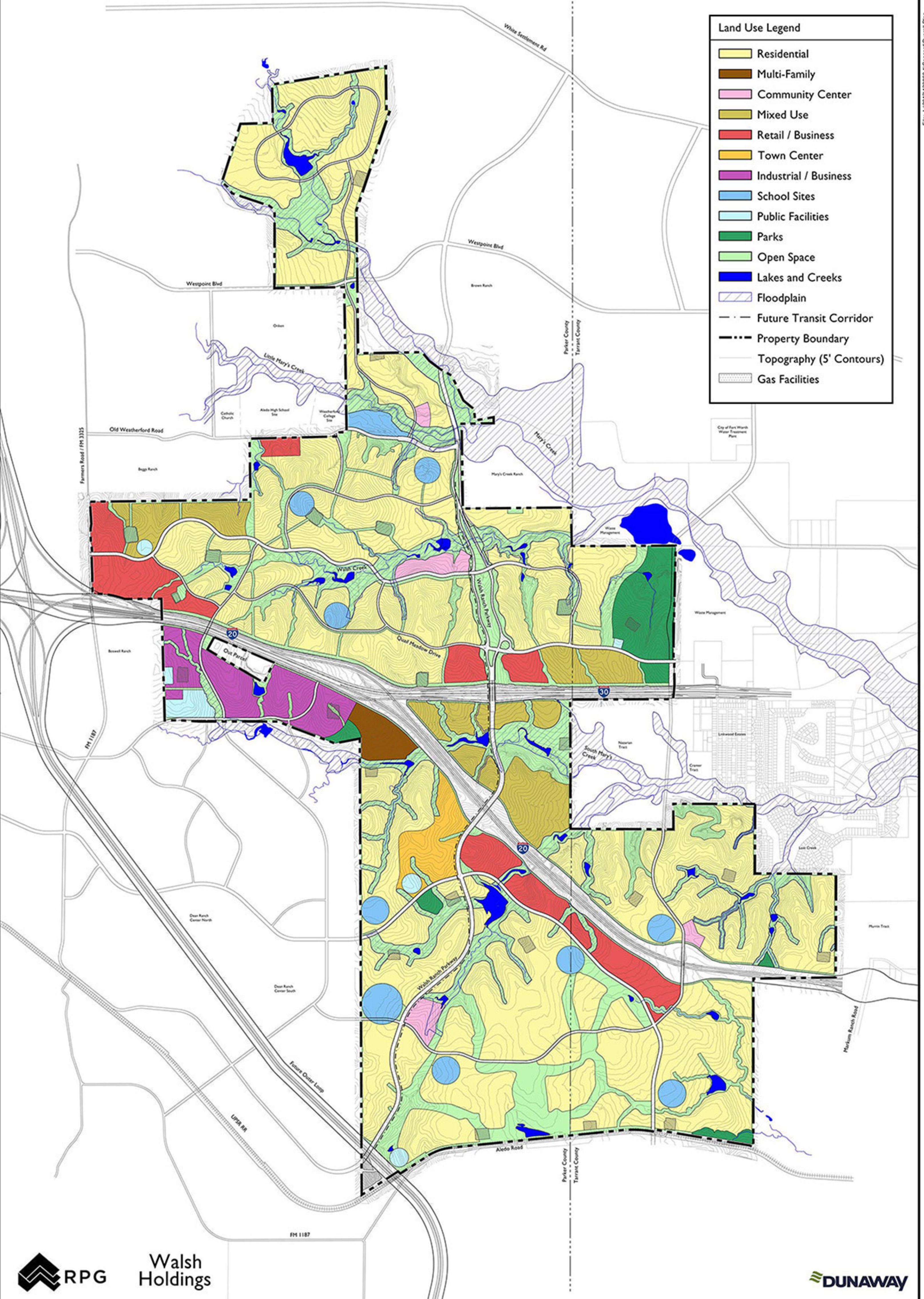


Land Use Legend

- Residential
- Multi-Family
- Community Center
- Mixed Use
- Retail / Business
- Town Center
- Industrial / Business
- School Sites
- Public Facilities
- Parks
- Lakes and Creeks
- Floodplain
- Future Transit Corridor
- Property Boundary
- Topography (5' Contours)
- Gas Facilities



Walsh
Fort Worth, Texas

CONCEPT PLAN

SCALE: 1" = 1/4 Mile
 0 1/8 1/4 1/2
 DATE: 05-29-2015



712 Congress Avenue, Suite 300
 Austin, TX 78701
 Tel: (512) 480-0032 Fax: (512) 480-0617
 www.rvplanning.com



All information furnished regarding this property is from sources deemed reliable. However, RVI has not made an independent investigation of these sources and no warranty or representation is made by RVI as to the accuracy thereof and same is submitted subject to errors, omissions, land plan changes, or other conditions. This land plan is conceptual in nature and does not represent any regulatory approval. Land plan is subject to change. The developer has reserved the right, without notice, to make changes to this map and other aspects of the development to comply with governmental requirements and to fulfill its marketing objective.